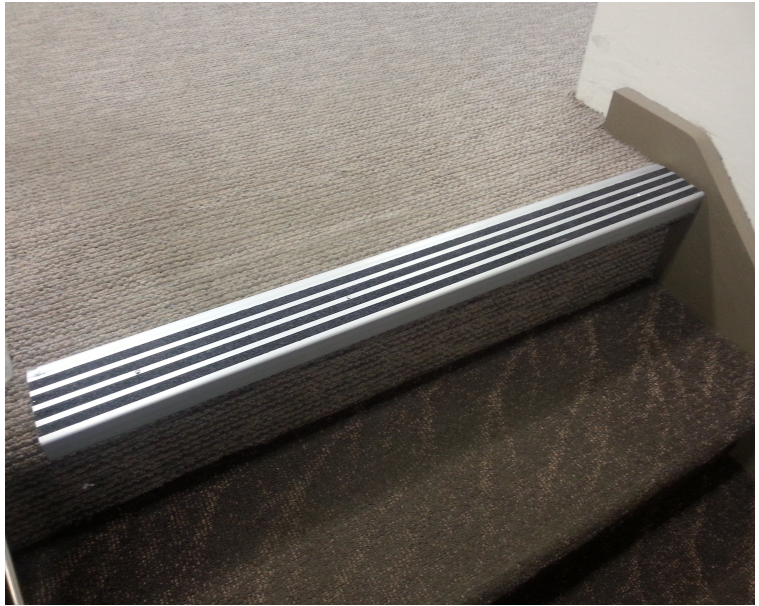




ALUMINIUM STAIR NOSING



Introduction

RCF10 Safety Stair Tread Nosing is specially designed for installation over new and existing steps and stairways. It is applicable where pedestrian safety, appearance and stair longevity is off a particular concern.

As one of our most popular stair nosing's it exceeds the requirements of the Australian/New Zealand Standards for anti-slip AS4586:2004, Slip resistance classification of new pedestrian surface materials and the National Construction Code.

Compliance

The RCF10 Stair Tread Nosing Inserts are 51mm wide and available in three standard colours to meet the minimum depth and luminance contrast requirements of the National Construction Code 3.2 and the Australian/New Zealand Standards AS1428 — 2009 Design for access and mobility, Part 1.

Ultimate in Anti-Slip Safety with a choice of either the following standard inserts

- An R13 rated silicon oxide grit insert. Particularly used when it comes to providing the highest possible safety rating too external wet areas. Colours available: All colours
- OR
- 51mm PVC Nitrite rubber alloy grade T9/04 rubber insert available in black, safety yellow or grey. Slip tested to a Mean Value of BPN 60 meeting the requirements of AS/NZS 4586 Appendix A
- A 51mm fully luminous glow-in-the-dark insert can be provided at an extra cost.

Material

- 10 um anodised aluminium 3mm thickness weighting 0.71Kg/m

Size

- 32mm x 100mm x 12mm inserts

Length

- Available in 3620mm lengths or custom cut to required sizes

Profile

- Round edge turndown with bevelled serrated back edge
- 8mm diameter countersunk holes are provided at 240mm centres

Fixing

- On suitable surfaces the nosing can be fixed using an adhesive or by drilling and screwing
- A double sided fibreglass tape is provided to secure the insert over the fixed screws.